

Mangoes

Mango possesses anti-diabetic, anti-oxidant, anti-viral, cardio-tonic, hypotensive & anti-inflammatory properties, they are a great source of magnesium and potassium.

full
sun

Mango, Haden



Season: Jan - Mar
Fruit Size: 16-24 oz
Fiber: moderate near seed
Zone: 9-11
Cold Tolerance: to 25°F mature
Tree Size: 20-30' tall 14-16' wide

Description: prolific producer, bright red over a bright apricot-yellow skin with hints of orange
Flavor: classic peachy, creamy, slightly floral, sweet flavor

full sun
part shade

Mango, Ice Cream



Season: May - Jul
Fruit Size: 8-10 oz
Fiber: fiber-less
Zone: 9-11
Cold Tolerance: to 40°F
Tree Size: 6-10' tall, dwarf tree does well in a container

Description: medium growth rate, average production, thick skin, tolerant of disease & pests for harvests with no pesticides
Flavor: tender, juicy with a sweet richness reminiscent of mango sorbet

full
sun

Mango, Nam Doc Mai



Season: May - Jul
Fruit Size: 1- oz
Fiber: fiber-less
Zone: 9-11
Cold Tolerance: to 50°F
Tree Size: 10-15' tall & wide

Description: most sought after mango variety in Asia, yellow to golden in color, smooth flesh, elongated shape that tapers to a point, average yields of 4-6 bushels
Flavor: Thai mango exceptional in taste, very sweet, juicy, aromatic, silky, dessert quality

full
sun

Mango, Carrie



Season: May - Jul
Fruit Size: 10-14 oz
Fiber: not fibrous
Zone: 9-11
Cold Tolerance: to 30°
Tree Size: 10-15' tall, moderate to fast growing

Description: highly resistant to fungus and disease, average production
Flavor: exceptionally rich, sweet, strong and a little peachy, strong aroma

full
sun

Mango, Madame Francis

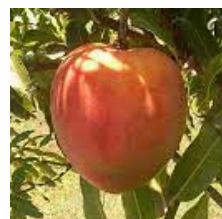


Season: May - Jan
Fruit Size: 16-24 oz, medium size
Fiber: hearty, low-fiber
Zone: 9-11
Cold Tolerance: ?
Tree Size: 15' tall, 15' wide, vigorous grower, spreading canopy

Description: Haitian dessert mango, oblong, soft flesh, solid yellow at maturity, orange colored flesh
Flavor: juicy with a rich, wonderfully strong, with some spice notes, spicy, sweet flavor

full
sun

Mango, All Summer



Season: May - Oct
Fruit Size: 24-32- oz
Fiber: fiber-less
Zone: 9-11
Cold Tolerance: to 25-32°F
Tree Size: 15-20' tall, 10-15' wide, medium to fast growth rate

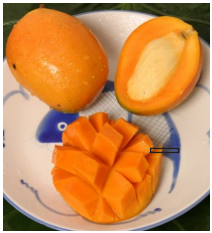
Description: fruit are large, round shaped, medium size and red-skin colored with yellow fiber-less flesh
Flavor: superb mango flavor, a little peach, so sweet you can eat the peel

Mangoes

Mango possesses anti-diabetic, anti-oxidant, anti-viral, cardio-tonic, hypotensive & anti-inflammatory properties, they are a great source of magnesium and potassium.

*full to
part sun*

Mango, *Gold Nugget*



Season: May - Oct, after 3 years
Fruit Size: 6-14 oz
Fiber: fiber-less
Zone: 9-11
Cold Tolerance: to 30°F
Tree Size: 20'+ tall & wide,
 fast growing

Description: flesh turns yellow-orange with a slight pink blush.

Flavor: mild, sweet flavor

*full
sun*

Mango, *Bombay*



Season: Jun - Jul
Fruit Size: 16 oz, small & round
Fiber: fiber-less
Zone: 9-10
Cold Tolerance: to 40°F
Tree Size: 15' tall, 15' wide
 extremely vigorous growth rate

Description: Indian mango, at maturity typically remains mostly green, with little red blush, flesh is dark orange, easily removable seed

Flavor: very sweet, rich and spicy

*full
sun*

Mango, *Mallika*



Season: Jun - Jul
Fruit Size: 10-20 oz
Fiber: fiber-less
Zone: 9-11
Cold Tolerance: to 40 °F, prune
 frost damage early spring
Tree Size: 10-15' tall 10' wide
 medium to fast growth rate

Description: oval, medium-sized, yellow pink skin

Flavor: citrus, melon and honey notes and is rich and exceptionally sweet, highly aromatic

*full
sun*

Mango, *Glenn*



Season: Jun - Jul
Fruit Size: 8-24 oz
Fiber: fiber-less, firm texture
Zone: 9-11
Cold Tolerance: to 35°
Tree Size: 30' tall, fast growing

Description: the Glenn mango is a Haden seedling, disease resistant, small seed

Flavor: mildly peachy, hints of melon, sweet & delicious

*full
sun*

Mango, *Julie Dwarf Orange*



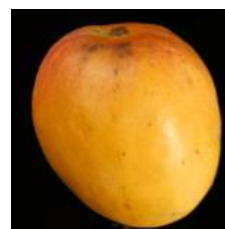
Season: Jun - Jul
Fruit Size: 8-12 oz, small fruit
Fiber: fiber-less
Zone: 9-11
Cold Tolerance: not tolerant
Tree Size: 10' tall, slow growing

Description: flesh is juicy and not fibrous, with a deep orange color, superior disease resistance, bears fruit within 2 years

Flavor: complex, very rich flavor, sweet-spicy quality

*full
sun*

Mango, *Graham*



Season: Jun - Aug
Fruit Size: 9-12- oz
Fiber: fiber-less
Zone: 9-11
Cold Tolerance: to 40°F
Tree Size: 20' tall, can be pruned
 to maintain 8' tall

Description: orange flesh, oval shape, skin is yellow at maturity and is bumpy

Flavor: rich, aromatic flavor with a resinous note

Mangoes

Mango possesses anti-diabetic, anti-oxidant, anti-viral, cardio-tonic, hypotensive & anti-inflammatory properties, they are a great source of magnesium and potassium.

*full
sun*

Mango, Edgar



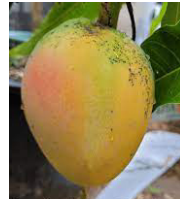
Season: Jun - Aug
Fruit Size: 14-22 oz
Fiber: fiber-less and firm
Zone: 9-10
Cold Tolerance: to 25-32 °F
Tree Size: 10-15' tall,
 medium to fast growth rate

Description: Edgar is an Edward & Gary cross, yellow skin, bright orange flesh

Flavor: tender, juicy, rich, classic, sweet flavor with a mild, pleasant aroma

*full
sun*

Mango, Venus



Season: Jul - Aug
Fruit Size: 16-24 oz
Fiber: fiber-less
Zone: 9-10
Cold Tolerance: to 40°F
Tree Size: 10-15' tall, slow growing

Description: fruit are round in shape, medium-sized, and turn yellow with some light red blush at maturity, flesh is firm, fiber-less, and light yellow in color

Flavor: flavor is nothing short of excellent, with a decadent and complex mix of sweetness and acidity

*full
sun*

Mango, Valencia Pride



Season: Jun - Aug
Fruit Size: 16-32 oz
Fiber: fiber-less, firm
Zone: 9-11
Cold Tolerance: briefly below 40°F
Tree Size: 20-30' tall, 15' wide,
 above average growth rate

Description: Narrow shape, weeping habit, green skin when ripe, disease resistant, moderately fungus resistant

Flavor: classic, sweet, aromatic, rich flavor like mango sorbet, notes of honeydew, melon, and a hint of sweet pineapple